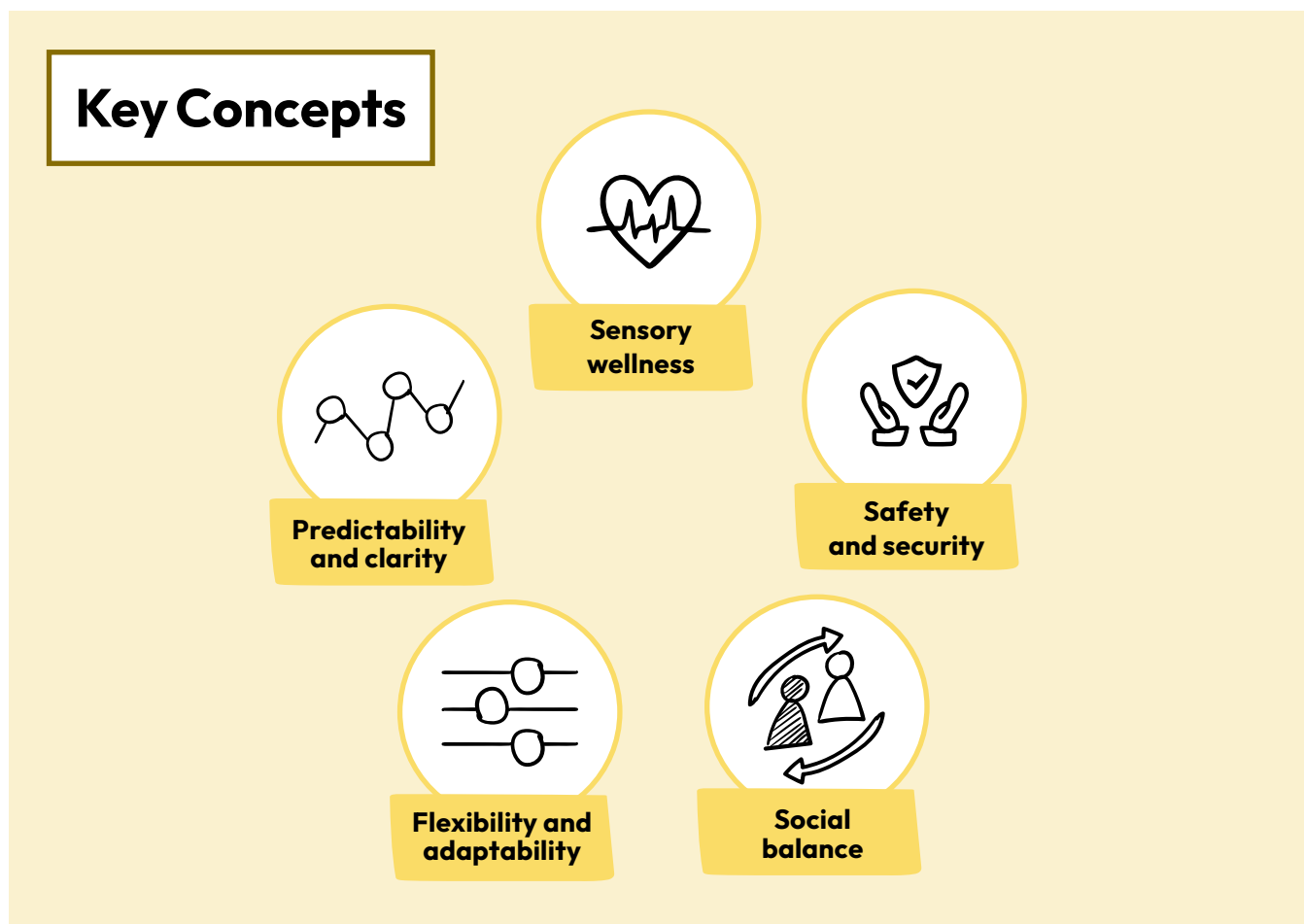


## Design Guides for Neuroinclusive Housing

Here are a few neuroinclusive design guides with ideas to consider when starting a new housing project or modifying existing spaces.

### Blueprint for the Mind: Creating Neuroinclusive Architectural Spaces

From Perkins & Will, a global design company, this guide provides a range of neuroinclusive design strategies and ways to implement them, mainly in public spaces and workplaces. It focuses on 5 related concepts of the built environment that can impact Neurodivergent people.



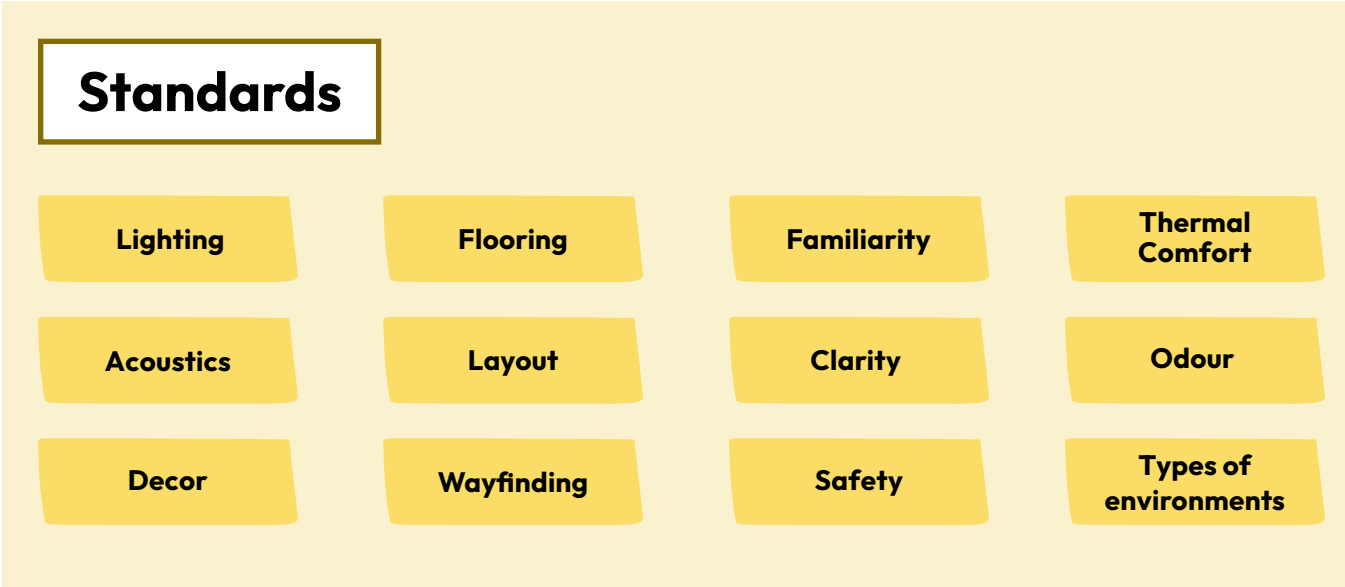
[https://issuu.com/perkinswill/docs/neuroinclusion\\_guide](https://issuu.com/perkinswill/docs/neuroinclusion_guide)



A related report and Neurodiversity Toolkit focusing more on the workplace might provide more inspiration and can be found on Perkins & Will's website: <https://research.perkinswill.com/projects/learning-from-biodiversity-to-support-neurodiversity-in-the-workplace/>

**Design for the Mind. Neurodiversity & the Built Environment - PAS 6463**

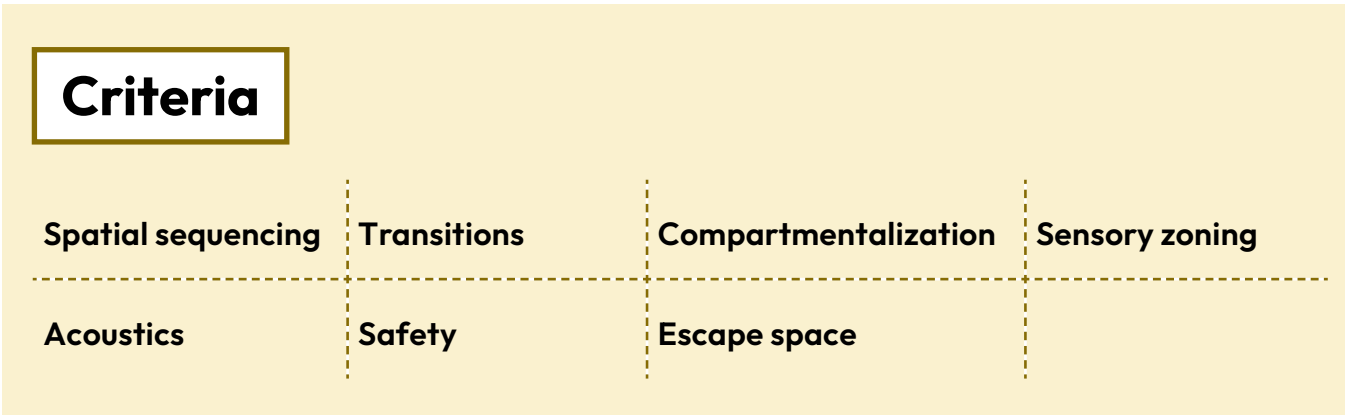
The British Standards Institution published this guide to establish standards of neuroinclusive design that can be used in wide range of spaces like housing, public areas, and businesses.



You'll need to enter some basic contact information to download the guide.  
<https://www.bsigroup.com/en-GB/insights-and-media/insights/brochures/pas-6463-design-for-the-mind-neurodiversity-and-the-built-environment/>

**The Autism Design Index**

This autism focused guide describes 7 important criteria for built environments that can be used to design and assess spaces in homes, schools, and community buildings.



<https://www.autism.archi/aspectss>